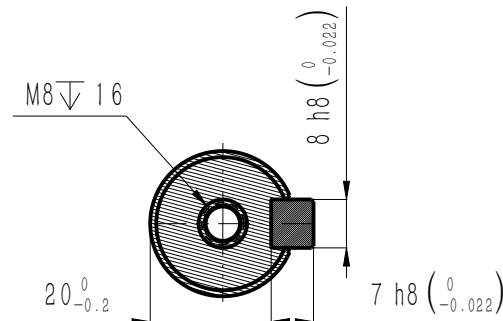


版本 Edition	变更内容 Description of the change
C	外观尺寸图模板更新





### 抱闸参数 Brake parameters

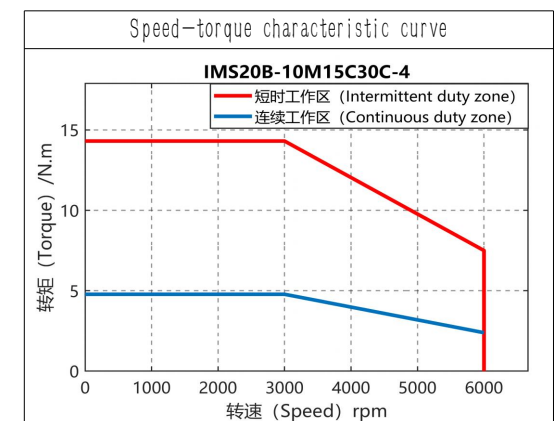
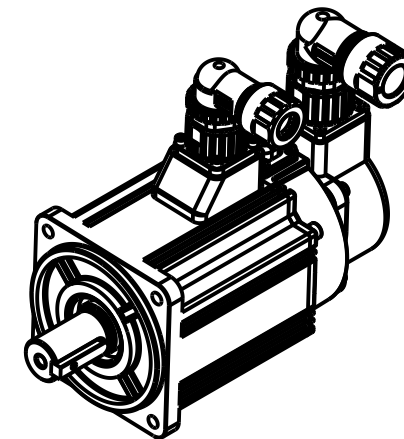
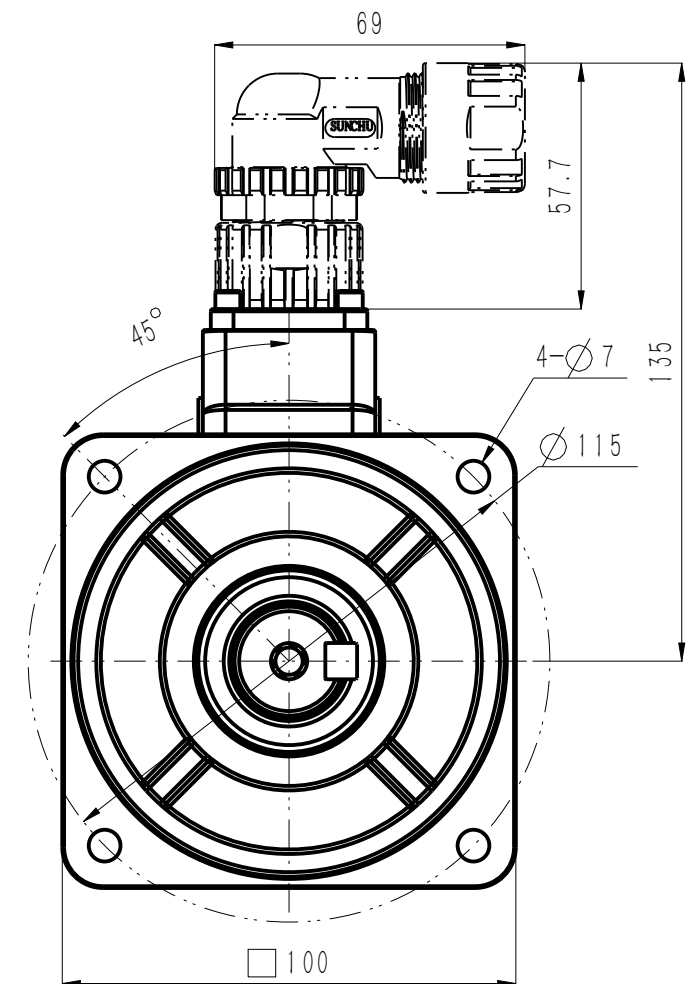
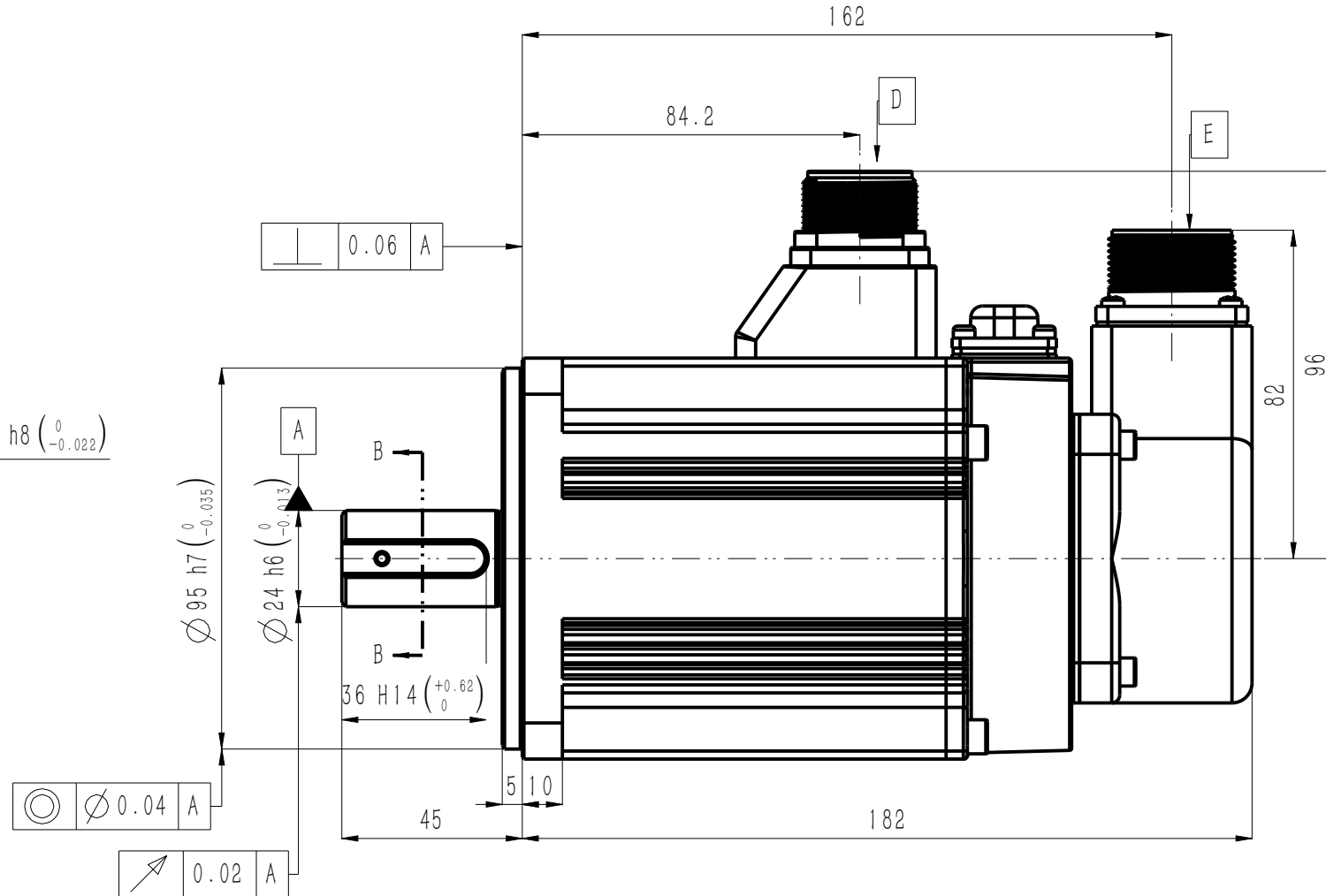
额定电压 Rated voltage	$24 \pm 10\%$	V DC
额定功率 Rated power	17.6	W
电阻(20℃) Resistance	$32.7 \pm 7\%$	$\Omega$
额定扭矩 Rated torque	8	N · m
释放电压 Release voltage	$> 1.2$	V
吸引电压 Pickup voltage	$< 16.8$	V
吸合时间 Pickup time	$< 100$	ms
释放时间 Release time	$< 40$	ms
回转间隙 Rotational Clearance	$< 0.5^\circ$ (20% 额定扭矩) (20% Rated torque)	

电机技术参数 Motor parameters

额定电压 Rated voltage	380	V AC
额定功率 Rated power	1.5	kW
额定扭矩 Rated torque	4.8	N · m
峰值扭矩 Peak torque	14.3	N · m
额定电流 Rated current	4.0	Arms
峰值电流 Peak current	14.0	Arms
额定转速 Rated speed	3000	rpm
峰值转速 Maximum speed	6000	rpm
扭矩系数 Torque constant	1.21	N · m/Arms
反电势常数 Back EMF constant	82.5	V/krpm
线电阻 line resistance	1.92	$\Omega$
线电感 line inductance	17.4	mH
转动惯量 Moment of inertia	$2.53 \pm 10\%$	kg · cm <sup>2</sup>
轴向允许载荷 Axial allowable load	196	N
径向允许载荷 Radial allowable load	686	N
极对数 Number of pole pairs	5	对

动力航插规格 Power connector		引线定义 Wiring definition					
CMS05A18-A6P		A	B	C	D	1	2
D 2 C		W	V	U	PE	24V DC	0V

IP 防护等级 Ingress Protection Rating	IP67	信号航插规格 Encoder connector	编码器规格 Connector specifications	引线定义 Wiring definition						
绝缘等级 Insulation class	F		<div>CMS3102A20-29P</div> <div><div>E</div></div>	17-bit magnetic encoder	A	B	E	F	G	H
绝缘电阻 Insulation resistance	>100MΩ DC500V	23-bit optical encoder		SD+ (蓝)	SD- (黄)	BAT+ (棕)	BAT- (白)	+5V (红)	0V (黑)	PE (绿)
电机重量 Motor weight	5.0 kg									
工作温度 Operating temperature	-20℃~40℃									
工作湿度 Operating humidity	20%~80% (不结露 Non-dewfall)									
推荐安装海拔 Recommend installing altitude	<1000m(1km以上降额使用) (Derate for use above 1km)									



SN	料号 P/N	整机型号 Model and Specification	编码器 Encoder
1	11101-01580	IMS20B-10M15C30C-4-M44-AUL	17位多圈磁编
2	11101-01582	IMS20B-10M15C30C-4-P94-AUL	23位多圈光编
<div> <div> <div></div> <div>C</div> <div>替换</div> <div>/</div> <div>20260204</div> </div> <div> <div>B</div> <div>新归档</div> <div>/</div> <div>20250825</div> </div> <div> <div>版本</div> <div>更改方式</div> <div>更改人</div> <div>日期</div> </div> <div> <div>设计</div> <div>校核</div> <div>工艺</div> <div>审核</div> <div>标准化</div> <div>批准</div> </div> <div> <div>料号</div> <div>图号</div> <div>重量</div> </div> <div> <div>名称</div> <div>电机外形图 Motor outline dimension drawing</div> </div> <div> <div>材质</div> <div>比例</div> </div> <div> <div>第 1 页</div> <div>共 1 页</div> </div> </div>			
<div> <div> <div></div> <div>C</div> <div>替换</div> <div>/</div> <div>20260204</div> </div> <div> <div>B</div> <div>新归档</div> <div>/</div> <div>20250825</div> </div> <div> <div>版本</div> <div>更改方式</div> <div>更改人</div> <div>日期</div> </div> <div> <div>设计</div> <div>校核</div> <div>工艺</div> <div>审核</div> <div>标准化</div> <div>批准</div> </div> <div> <div>料号</div> <div>图号</div> <div>重量</div> </div> <div> <div>名称</div> <div>电机外形图 Motor outline dimension drawing</div> </div> <div> <div>材质</div> <div>比例</div> </div> <div> <div>第 1 页</div> <div>共 1 页</div> </div> </div>			